



## Erratum

To cite this article: (2014) Erratum, Expert Opinion on Pharmacotherapy, 15:16, 2473-2473, DOI: [10.1517/14656566.2014.973742](https://doi.org/10.1517/14656566.2014.973742)

To link to this article: <https://doi.org/10.1517/14656566.2014.973742>



Published online: 10 Oct 2014.



Submit your article to this journal [↗](#)



Article views: 405



View related articles [↗](#)



View Crossmark data [↗](#)

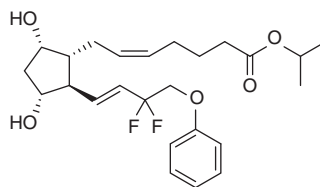
## Erratum

**Correction to: Efficacy and safety of tafluprost 0.0015% and timolol maleate 0.5% fixed combination in patients with ocular hypertension or open-angle glaucoma.**

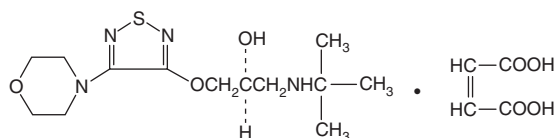
Lorenz K, Pfeiffer N. Efficacy and safety of tafluprost 0.0015% and timolol maleate 0.5% fixed combination in patients with ocular hypertension or open-angle glaucoma. *Expert Opin. Pharmacother.* 2014;15(15):2255-62

Following publication of this article, it was identified that the figures were incorrect.

The correct figures are given below.



**Figure 1. Tafluprost.**



**Figure 2. Timolol maleate.**