



A randomized, blinded study to evaluate the efficacy and safety of umeclidinium 62.5 µg compared with tiotropium 18 µg in patients with COPD

Gregory Feldman, François Maltais, Sanjeev Khindri, Mitra Vahdati-Bolouri, Alison Church, William A Fahy & Roopa Trivedi

To cite this article: Gregory Feldman, François Maltais, Sanjeev Khindri, Mitra Vahdati-Bolouri, Alison Church, William A Fahy & Roopa Trivedi (2016) A randomized, blinded study to evaluate the efficacy and safety of umeclidinium 62.5 µg compared with tiotropium 18 µg in patients with COPD, International Journal of Chronic Obstructive Pulmonary Disease, , 719-730, DOI: [10.2147/COPD.S102494](https://doi.org/10.2147/COPD.S102494)

To link to this article: <https://doi.org/10.2147/COPD.S102494>



© 2016 Feldman et al. This work is published and licensed by Dove Medical Press Limited



Published online: 07 Apr 2016.



[Submit your article to this journal](#)



Article views: 113



[View related articles](#)



[View Crossmark data](#)



Citing articles: 5 [View citing articles](#)

A randomized, blinded study to evaluate the efficacy and safety of umeclidinium 62.5 µg compared with tiotropium 18 µg in patients with COPD

Gregory Feldman¹
François Maltais²
Sanjeev Khindri³
Mitra Vahdati-Bolouri³
Alison Church⁴
William A Fahy³
Roopa Trivedi^{4,5}

¹S. Carolina Pharmaceutical Research, Spartanburg, SC, USA; ²Institut universitaire de cardiologie et de pneumologie de Québec, Québec, QC, Canada; ³GSK, Respiratory Research and Development, Middlesex, UK; ⁴GSK, Respiratory and Immuno-Inflammation Research, Triangle Park, NC, USA; ⁵Pearl Therapeutics Inc., Durham, NC, USA

Background: The long-acting muscarinic antagonists umeclidinium (UMEC) and tiotropium (TIO) are approved once-daily maintenance therapies for COPD. This study investigated the efficacy and safety of UMEC versus TIO in COPD.

Methods: This was a 12-week, multicenter, randomized, blinded, double-dummy, parallel-group, non-inferiority study. Patients were randomized 1:1 to UMEC 62.5 µg plus placebo or TIO 18 µg plus placebo. The primary end point was trough forced expiratory volume in 1 second (FEV₁) at day 85 (non-inferiority margin –50 mL; per-protocol [PP] population). Other end points included weighted mean FEV₁ over 0–24 and 12–24 hours post-dose. Patient-reported outcomes comprised Transition Dyspnea Index score, St George's Respiratory Questionnaire total score, and COPD Assessment Test score. Adverse events were also assessed.

Results: In total, 1,017 patients were randomized to treatment. In the PP population, 489 and 487 patients received UMEC and TIO, respectively. In the PP population, change from baseline in trough FEV₁ was greater with UMEC versus TIO at day 85, meeting non-inferiority and superiority margins (difference: 59 mL; 95% confidence interval [CI]: 29–88; $P < 0.001$). Similar results were observed in the intent-to-treat analysis of trough FEV₁ at day 85 (53 mL, 95% CI: 25–81; $P < 0.001$). Improvements in weighted mean FEV₁ over 0–24 hours post-dose at day 84 were similar with UMEC and TIO but significantly greater with UMEC versus TIO over 12–24 hours post-dose (70 mL; $P = 0.015$). Clinically meaningful improvements in Transition Dyspnea Index and St George's Respiratory Questionnaire were observed with both treatments at all time points. No differences were observed between UMEC and TIO in patient-reported outcomes. Overall incidences of adverse events were similar for UMEC and TIO.

Conclusion: UMEC 62.5 µg demonstrated superior efficacy to TIO 18 µg on the primary end point of trough FEV₁ at day 85. Safety profiles were similar for both treatments.

Keywords: tiotropium, umeclidinium, COPD, non-inferiority, long-acting muscarinic antagonist

Introduction

COPD contributes significantly to morbidity and mortality, and is predicted to be the third leading cause of death worldwide by 2030.^{1,2} COPD is characterized by chronic and progressive breathlessness, cough, and sputum production, which can all be a major cause of disability.¹

Bronchodilators are central to the pharmacological management of COPD.¹ Long-acting muscarinic antagonists (LAMAs) are an integral part of management in stable

Correspondence: Gregory Feldman
S. Carolina Pharmaceutical Research,
151 Harold Fleming Court, Spartanburg,
SC 29303, USA
Tel +1 864 515 0092
Fax +1 864 515 0094
Email gfeld3232@aol.com

COPD and have been shown to provide improvements in lung function, hyperinflation, symptoms, and health status, while reducing exacerbations.^{3–5} However, until recently, tiotropium (TIO) was the only LAMA available for patients with COPD.⁶ Three other LAMAs, aclidinium bromide (twice daily),⁷ glycopyrronium bromide (once daily),⁸ and umeclidinium (UMEC; once daily),^{9,10} have now been approved for the treatment of COPD. The results of two randomized active comparator clinical trials of twice-daily aclidinium bromide 400 µg and once-daily glycopyrronium 50 µg showed that both these drugs had similar efficacy to TIO 18 µg, as assessed by trough forced expiratory volume in 1 second (FEV₁).^{11,12} However, limited data are available comparing the efficacy and safety of UMEC with other LAMAs.

The main aim of this study was to investigate whether treatment with once-daily UMEC 62.5 µg was non-inferior to TIO 18 µg, as assessed by trough FEV₁ on treatment day 85 in symptomatic patients with moderate-to-severe COPD. Additionally, efficacy, as assessed by other lung function and patient-reported outcomes (PROs), and safety of UMEC and TIO were also evaluated.

Methods

Study design

This was a 12-week, multicenter, randomized, blinded, double-dummy, parallel-group study, conducted in patients with COPD between September 2014 and June 2015 (GSK study number: 201316; Clinicaltrials.gov identifier: NCT02207829) in Canada, Chile, Denmark, France, Germany, Italy, Romania, Korea, South Africa, the Russian Federation, the Ukraine, and the USA.

Patients meeting the eligibility criteria at screening (Visit 1) completed a 7–14-day run-in period prior to randomization. Eligible patients were then randomized at clinic Visit 2 (day 1) to 12 weeks of treatment. Clinic visits during the 12-week treatment period were on days 2, 28, 56, 84, and 85. In a subset of patients (n=250), 24-hour serial spirometry was conducted at days 1 and 84. Inhaler assessments were conducted to evaluate errors, ease of use, and inhaler preference.

The study protocol and written informed consent were reviewed and approved by the Chesapeake Institutional Review Board, as well as each relevant national, regional, or independent ethics committee or institutional review board, in accordance with Good Clinical Practice. This study was conducted in accordance with Good Clinical Practice and the ethical principles outlined in the Declaration of Helsinki (2008).¹³

Patients

Patients eligible for inclusion were ≥40 years of age with a diagnosis of COPD in accordance with the American

Thoracic Society/European Respiratory Society definition,¹⁴ current or former cigarette smokers with ten or more pack-years cigarette smoking history, had a pre- and post-albuterol/salbutamol FEV₁/forced vital capacity (FVC) ratio of <0.70, and a post-albuterol/salbutamol FEV₁ of 30%–70% of predicted normal values. Patients also had a dyspnea score of ≥2 on the modified Medical Research Council Dyspnea Scale at Visit 1.

Key exclusion criteria included pregnancy, a current diagnosis of asthma or other significant respiratory disorder or other condition that may affect respiratory function (eg, unstable or life-threatening cardiac disease, a neurological condition), lung volume reduction surgery, or hospitalization for COPD/pneumonia within 12 weeks prior to Visit 1. Patients were also excluded for the use of long-term oxygen therapy (prescribed for >12 hours per day) and use of COPD maintenance medications other than study medication, with the exception of inhaled corticosteroids (ICSs). The use of prohibited medications ([Table S1](#)) within the specified time periods also excluded patients from the study.

Treatments

After the run-in period, patients were randomized 1:1 to once-daily UMEC 62.5 µg (delivering 55 µg) administered via the ELLIPTA™ dry powder inhaler (DPI) plus placebo (PBO) administered via the HandiHaler®, or once-daily TIO 18 µg (delivering 10 µg) administered via the HandiHaler® plus PBO administered via the ELLIPTA™ DPI. Patients were provided albuterol/salbutamol for use as a rescue medication. Active and PBO inhalers were identical in appearance, and all patients and physicians were masked to study treatment as described previously.^{15,16} Further details on study blinding are provided in the [Supplementary materials](#) section.

The randomization code was generated by GSK using a validated computerized system RandAll version NG. Patients were randomized using RAMOS interactive voice technology. Randomization was further stratified according to whether or not the patient participated in 24-hour serial FEV₁ assessments.

Outcomes and assessments

Primary end point

Trough FEV₁ on day 85 (defined as the mean of the FEV₁ values obtained 23 and 24 hours after dosing on day 84) in the per-protocol (PP) population.

Other lung function outcomes

Other lung function end points included the following: trough FEV₁ on day 85 in the intent-to-treat (ITT) population;

trough FEV₁ on days 2, 28, 56, and 84 (ITT population); trough FVC on days 2, 28, 56, 84, and 85 (ITT population); weighted mean (WM) FEV₁ over 0–12 hours post-dose, 12–24 hours post-dose, and 0–24 hours post-dose, each on days 1 and 84 (subset analysis); and serial FEV₁ on days 1 and 84 (subset analysis).

Patient-reported outcomes

PROs included Transition Dyspnea Index (TDI) focal score and the proportion of TDI responders on days 28, 56, and 84. TDI responders were defined as patients with a ≥ 1 unit TDI focal score.¹⁷ St George's Respiratory Questionnaire (SGRQ) total score and the proportion of SGRQ responders on days 28 and 84 were also assessed. SGRQ responders were defined by a reduction from baseline of ≥ 4 units in SGRQ total score.¹⁸ Finally, COPD Assessment Test (CAT) score and the proportion of CAT responders (defined as a reduction from baseline of ≥ 2 units in CAT score¹⁹) were assessed on days 28 and 84. Rescue medication was also an end point and was assessed by the mean number of puffs/day of rescue medication and percentage of rescue-free days over the study duration (weeks 1–12).

Inhaler assessments

Patient preference for the ELLIPTA™ DPI compared with the HandiHaler® was assessed at the end of the patient's treatment phase, and "ease of use" rating for the ELLIPTA™ DPI compared with the HandiHaler® was assessed on days 28 and 84. Inhaler errors (IEs) were assessed in a subset of patients on days 1, 28, and 84 using the IE checklists, based on steps in the patient information leaflets for each inhaler.^{20,21} A critical error was predefined as an error that was most likely to result in no or only minimal medication being inhaled. An overall error included a critical and non-critical error.

Post hoc analyses

Post hoc analyses were performed on trough FEV₁ in the ITT population. These included a subgroup analysis by Global initiative for chronic Obstructive Lung Disease (GOLD) Grade 1/2 and Grade 3/4, and GOLD Groups B and D. Additionally, a subgroup analysis by ICS use at screening was performed. An analysis by GOLD Grade 1/2 and Grade 3/4, each split by ICS use, was also performed.

A post hoc FEV₁ responder analysis (by GOLD grade) was performed, whereby a response was defined as an increase of ≥ 100 mL above baseline in trough FEV₁ (minimum clinically important difference [MCID])²².

Safety end points

Safety assessments included the incidence of adverse events (AEs) and vital sign measurements. The incidence of COPD exacerbations was also assessed. A COPD exacerbation was defined as an acute worsening of symptoms of COPD requiring the use of any treatment beyond study medication or rescue albuterol/salbutamol. This included the use of systemic corticosteroids, antibiotics, and/or emergency treatment or hospitalization. Patients experiencing an exacerbation remained in the study at the discretion of the study investigator if they received ≤ 14 days of treatment with systemic corticosteroids or antibiotics and did not require hospitalization.

Statistical analysis

Non-inferiority and superiority criteria

The non-inferiority margin was set at -50 mL, which is half the generally accepted MCID for trough FEV₁.²² UMEC was therefore considered non-inferior to TIO if the lower boundary of the 95% confidence interval (CI) around the UMEC versus TIO treatment difference was greater than -50 mL, and superior if it was greater than 0 mL.

Testing hierarchy

Inferences drawn from the *P*-values presented in this study were as follows: If non-inferiority of UMEC versus TIO was demonstrated for the primary end point, inference was drawn from *P*-values for treatment comparisons that were statistically significant ($P < 0.05$). If superiority of UMEC versus TIO was demonstrated for the primary end point, *P*-values were used to indicate the strength of that superiority, and inference was drawn from *P*-values for treatment comparisons (statistically significant if $P < 0.05$). If non-inferiority of UMEC versus TIO was not demonstrated for the primary end point, no inference was drawn from *P*-values for treatment comparisons on other end points.

Analysis populations

The ITT population comprised all patients randomized to treatment who received at least one dose of study medication.

The PP population comprised all patients in the ITT population, including those who did not complete the study, who did not have a protocol deviation considered to impact efficacy. The PP population was used for analysis of the primary comparison of the primary end point only, to avoid bias of the results toward equivalence, which could make a truly inferior treatment appear to be non-inferior.²³ This approach was intended to maximize any true differences

between treatments and has been employed in a previous non-inferiority study.¹¹ As the study was not designed to detect non-inferiority on the other end points, the ITT population (or a subset thereof) has been used for other end points because it adheres to the randomization procedure and is generally conservative.²⁴ Patients experiencing a COPD exacerbation were also excluded from PP analyses from the onset of the exacerbation, owing to the potential impact that the exacerbation or medications used to treat it may have had on efficacy data.

The 24-hour (TFH) population comprised all patients in the ITT population for whom 24-hour spirometry was performed. The TFH population was used for the analysis of serial FEV₁ and 0–12-, 12–24-, and 0–24-hour WM FEV₁ end points.

The IE population comprised all patients in the ITT population who completed the IE checklist. The IE population was used for the analysis of critical and overall IE end points.

Sample size

Sample size calculations used a one-sided 2.5% significance level and an estimate of residual standard deviation for trough FEV₁ of 220 mL.

With a non-inferiority margin of –50 mL, and assuming that the true mean treatment difference was 0 mL, it was calculated that a study with 816 evaluable patients would have 90% power to determine the non-inferiority of UMEC compared with TIO based on trough FEV₁ at day 85 (PP population). A total of 1,006 patients were planned for randomization, based on an estimated 10% of patients providing a day 85 assessment being excluded from the PP population and a 10% withdrawal rate. The sample sizes for the TFH and IE populations were chosen to provide an adequate number of data points to characterize the lung function response over 24 hours and the IEs, respectively, and were not based on providing an adequate number of patients for statistical analysis purposes.

Results

Patient disposition and characteristics

Of the 1,259 patients enrolled, 1,017 were randomized to treatment and comprised the ITT population, of which 941 patients completed the study (UMEC, n=467; TIO, n=474; Figure 1). The PP population comprised 976 patients (UMEC, n=489; TIO, n=487; Figure 1). There were 295 patients in the TFH population (UMEC, n=148; TIO, n=147).

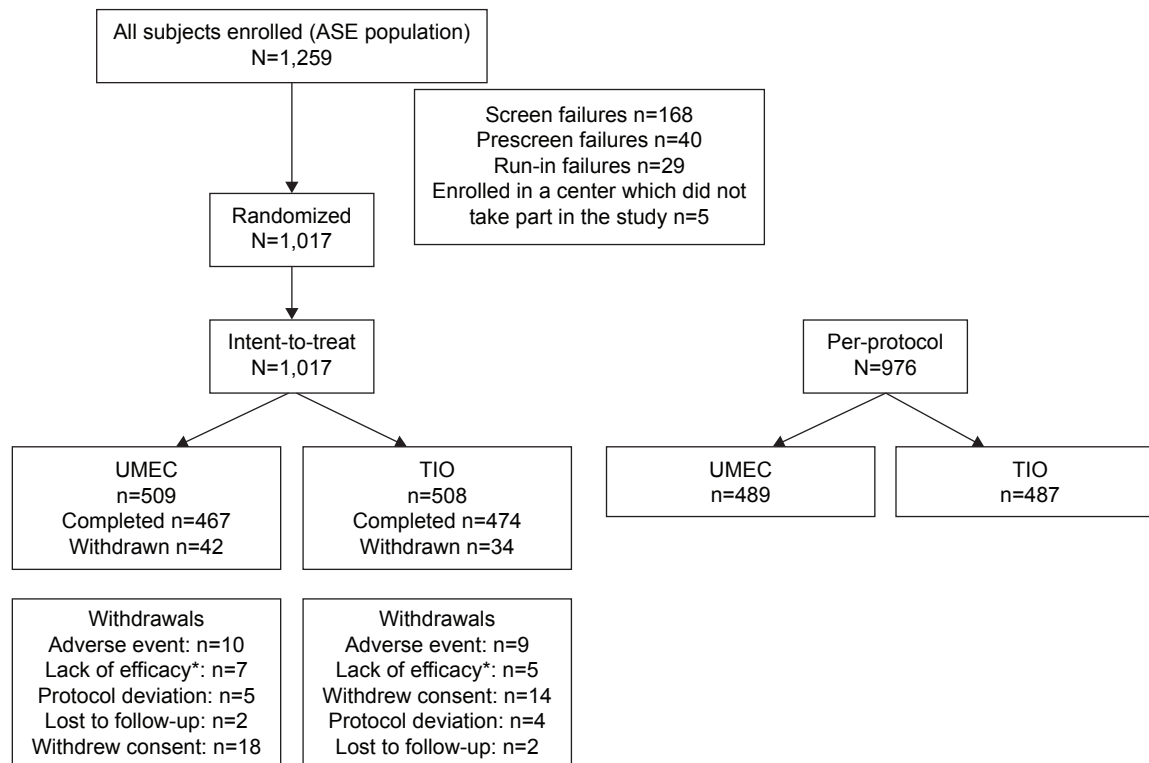


Figure 1 Patient disposition.

Note: *Lack of efficacy includes patients who withdrew due to COPD exacerbation.

Abbreviations: ASE, all subjects enrolled; TIO, tiotropium; UMEC, umeclidinium.

Patients had symptomatic moderate-to-severe COPD (GOLD Grade 2–3 and GOLD Groups B and D), and the majority of patients were male (Table 1). Baseline demographics were similar between UMEC and TIO treatment groups (Table 1).

Lung function end points

Primary efficacy end point

The least squares (LS) mean change from baseline in trough FEV₁ was greater with UMEC than with TIO at day 85 in the PP population (difference: 59 mL, 95% CI: 29–88; $P<0.001$; Figure 2). Similar results were observed in the analysis of trough FEV₁ at day 85 for the ITT population (53 mL, 95% CI: 25–81; $P<0.001$; Table 2).

Other lung function end points

UMEC resulted in a statistically significant difference in LS mean change from baseline trough FEV₁ versus TIO at days 28, 56, and 84 (all $P\leq 0.003$) but not at day 2 (Figure 2). UMEC also demonstrated a statistically significant difference in LS mean change from baseline trough FVC versus TIO at days 28, 56, 84, and 85 (all $P\leq 0.016$) but not at day 2 (Table S2).

UMEC was similar to TIO in 0–12 and 0–24 hours post-dose WM FEV₁ at day 84 (0–12 hours post-dose: 39 mL,

95% CI: –24 to 101; $P=0.222$; and 0–24 hours post-dose: 55 mL, 95% CI: –2 to 113; $P=0.058$; Table 2). Treatment with UMEC resulted in statistically significant improvements in 12–24 hours post-dose WM FEV₁ at day 84 compared with TIO (70 mL, 95% CI: 14–127; $P=0.015$; Table 2).

On day 1, the difference between treatment groups in LS mean change from baseline in FEV₁ was similar at all time points through 24 hours post-dose (Figure 3A), but on day 84, the difference between UMEC and TIO in LS mean change from baseline in FEV₁ favored UMEC through 24 hours post-dose, with statistically significant differences at pre-dose ($P=0.005$) and from 21 hours onward (21 hours post-dose: 76 mL, 95% CI: 11–141, $P=0.022$; and 24 hours post-dose: 67 mL, 95% CI: 8–126; $P=0.026$; Figure 3B).

Patient-reported outcomes

TDI focal score, SGRQ total score, and CAT score

Similar improvements were observed in TDI, SGRQ, and CAT score for UMEC and TIO (Table 3). Both treatments demonstrated improvements in the LS mean change from baseline in SGRQ total score that met the MCID of ≥ 4 units at day 84 (Table 3). These trends were also observed on days 28 and 56 (Table S3). No differences were observed in SGRQ or CAT score between UMEC and TIO at day 28 (Table S3) or day 84 (Table 3). UMEC and TIO resulted in

Table 1 Baseline demographics and clinical characteristics (ITT population)

Demographic characteristic	UMEC 62.5 μ g (n=509)	TIO 18 μ g (n=508)	Total (N=1,017)
Age (years), mean (SD)	64.4 (8.1)	64.1 (8.3)	64.2 (8.2)
Female, n (%)	145 (28)	137 (27)	282 (28)
Current smoker at screening, n (%)	259 (51)	260 (51)	519 (51)
Smoking pack-years ^a	41.2 (21.4)	41.9 (21.9)	41.6 (21.6)
Post-salbutamol FEV ₁ (L) ^b , mean (SD)	1.49 (0.41)	1.51 (0.44)	1.50 (0.42)
Post-salbutamol FEV ₁ /FVC ^b , mean (SD)	48.9 (10.1)	48.2 (10.1)	48.6 (10.1)
Reversibility to salbutamol ^{c,d} , mean (SD)			
Reversible	161 (32)	153 (30)	314 (31)
Nonreversible	347 (68)	354 (70)	701 (69)
GOLD Grades 1–4 (percent-predicted FEV ₁), n	508	508	1,016
Grade 2 (moderate COPD), n (%)	281 (55)	283 (56)	564 (56)
Grade 3 (severe COPD), n (%)	227 (45)	225 (44)	452 (44)
GOLD Groups A–D using mMRC ^b			
Group B (low risk, more symptoms), n (%)	244 (48)	229 (45)	473 (47)
Group D (high risk, more symptoms), n (%)	264 (52)	279 (55)	543 (53)
ICS use at screening			
ICS users, n (%)	247 (49)	229 (45)	476 (47)
ICS nonusers, n (%)	262 (51)	279 (55)	541 (53)

Notes: ^aSmoking pack-years = (number of cigarettes smoked per day/20) \times number of years smoked. ^bn=508 in UMEC, n=508 in TIO. ^cn=508 in UMEC, n=507 in TIO. ^dReversibility was defined as an increase in FEV₁ of $\geq 12\%$ and ≥ 200 mL following administration of salbutamol; non-reversibility was defined as an increase in FEV₁ of <200 mL or a ≥ 200 mL increase that was $<12\%$ from pre-salbutamol FEV₁.

Abbreviations: FEV₁, forced expiratory volume in 1 second; FVC, forced vital capacity; GOLD, Global initiative for chronic Obstructive Lung Disease; ICS, inhaled corticosteroid; ITT, intent-to-treat; mMRC, modified Medical Research Council; SD, standard deviation; TIO, tiotropium; UMEC, umeclidinium.

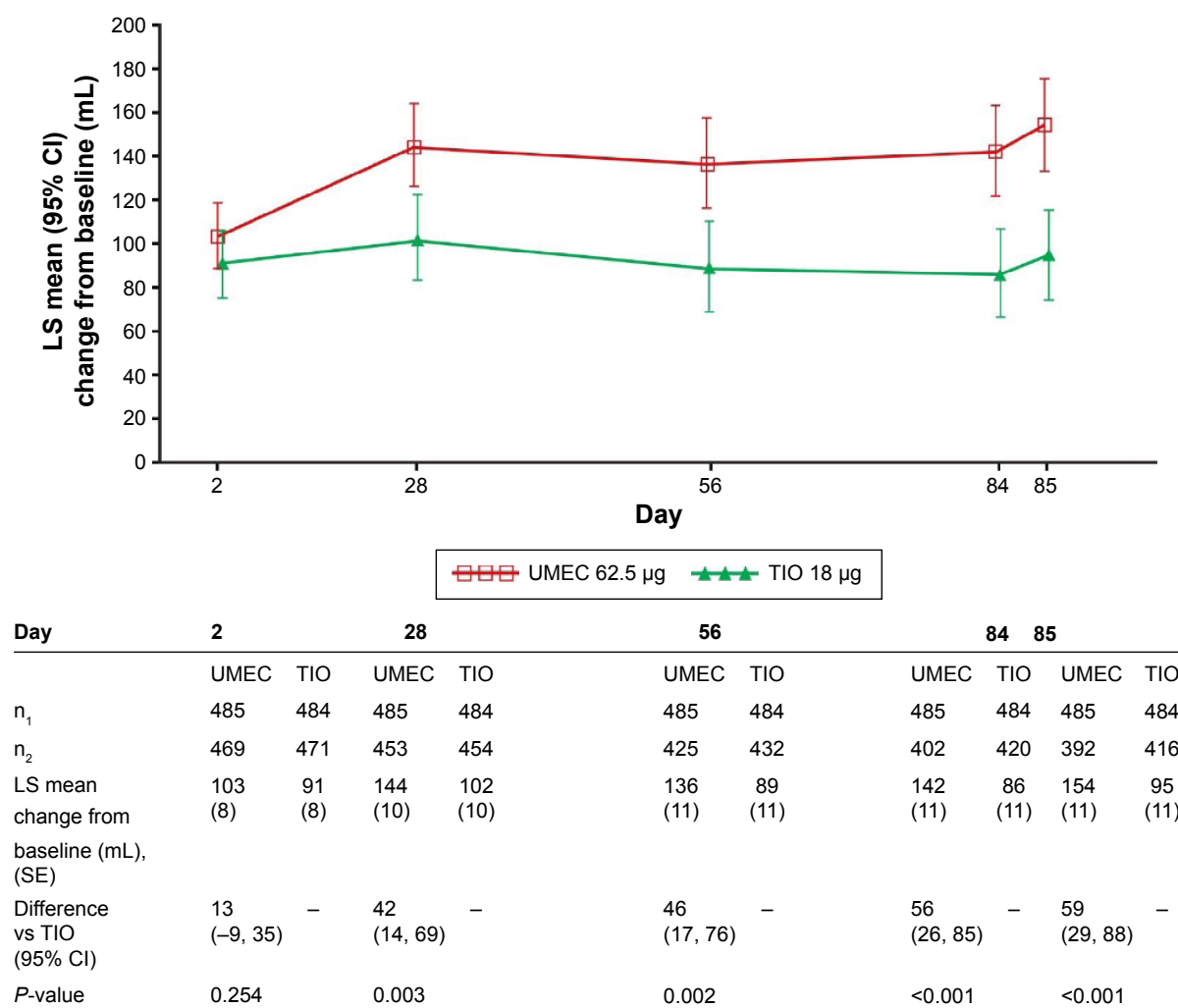


Figure 2 LS mean change from baseline in trough FEV₁ (mL) (PP population).

Notes: n₁, number of patients with analyzable data for ≥ 1 time points. n₂, number of subjects with analyzable data at the current time point.

Abbreviations: CI, confidence interval; FEV₁, forced expiratory volume in 1 second; LS, least squares; PP, per-protocol; SE, standard error; TIO, tiotropium; UMEC, umeclidinium.

Table 2 Summary of lung function end points (ITT and TFH populations)

End point	UMEC 62.5 µg	TIO 18 µg	Treatment difference versus TIO (95% CI)
Trough FEV ₁ at day 85 ^a	n=508	n=504	
LS mean change from baseline (mL), (SE)	147 (10)	94 (10)	53 (25, 81); P<0.001
Trough FVC at day 85 ^{a,b}	n=508	n=504	
LS mean change from baseline (mL), (SE)	192 (17)	112 (17)	80 (34, 127); P<0.001
0–12 hours post-dose WM FEV ₁ at day 84 ^{c,d}	n=148	n=147	
LS mean change from baseline (mL), (SE)	152 (22)	113 (23)	39 (–24, 101); P=0.222
12–24 hours post-dose WM FEV ₁ at day 84 ^{c,d}	n=148	n=147	
LS mean change from baseline (mL), (SE)	55 (20)	–15 (20)	70 (14, 127); P=0.015
0–24 hours post-dose WM FEV ₁ at day 84 ^{c,d}	n=148	n=147	
LS mean change from baseline (mL), (SE)	104 (21)	49 (21)	55 (–2, 113); P=0.058

Notes: ^aITT population. ^bAnalysis was performed using a repeated measures model with covariates of treatment, baseline FVC, center group, 24-hour subset flag, day, day-by-baseline, and day-by-treatment interactions. ^cTFH population. ^dAnalysis performed using a repeated measures model with covariates of treatment, baseline FEV₁, center group, day, day-by-baseline and day-by-treatment interactions.

Abbreviations: CI, confidence interval; FEV₁, forced expiratory volume in 1 second; FVC, forced vital capacity; ITT, intent-to-treat; LS, least squares; SE, standard error; TFH, 24-hour; TIO, tiotropium; UMEC, umeclidinium; WM, weighted mean.

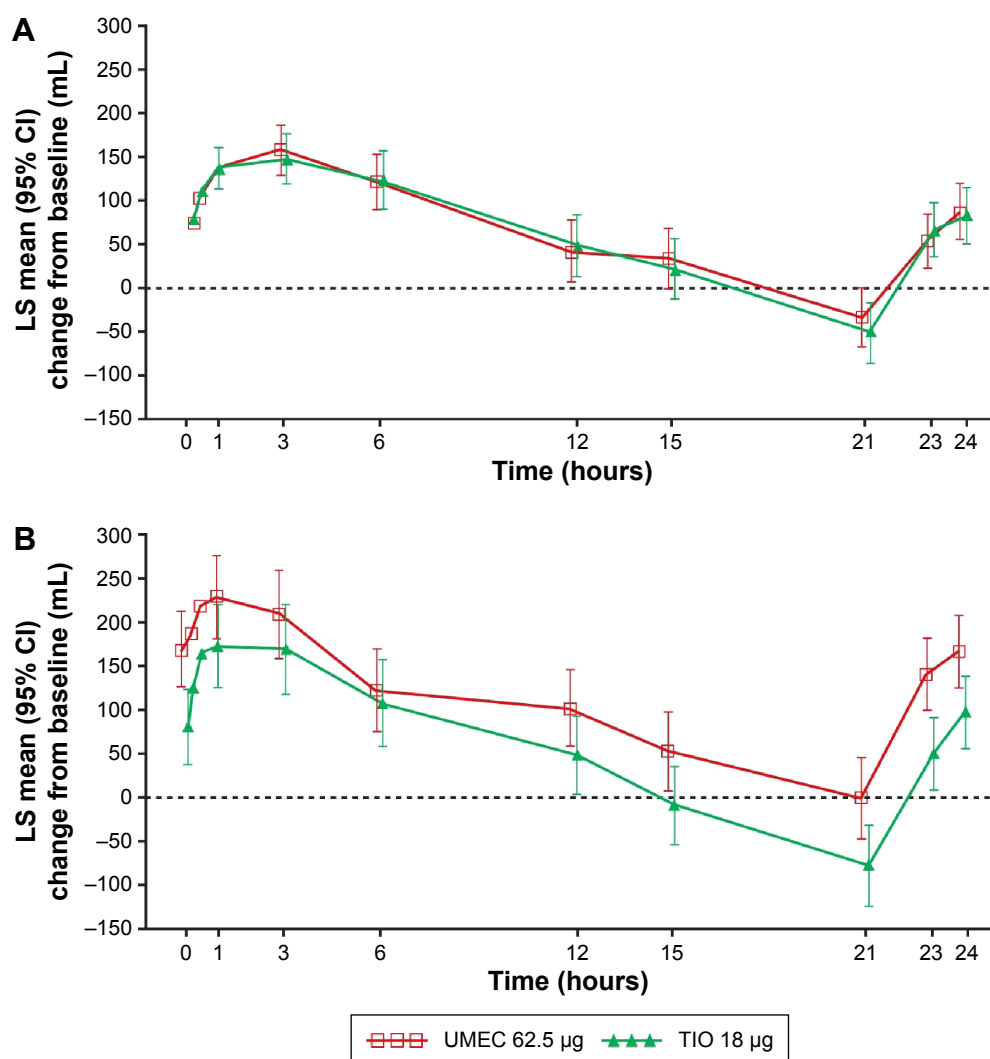


Figure 3 LS mean change from baseline in serial FEV₁ (mL) on day 1 (**A**) and on day 84 (**B**) (both days: TFH population).

Abbreviations: CI, confidence interval; FEV₁, forced expiratory volume in 1 second; LS, least squares; TFH, 24-hour; TIO, tiotropium; UMEC, umeclidinium.

Table 3 Summary of symptomatic and health-related quality of life end points (ITT population)

End point	UMEC 62.5 µg	TIO 18 µg	Treatment difference versus TIO (95% CI)
TDI focal score at day 84	n=492	n=490	
LS mean (SE)	1.96 (0.13)	1.90 (0.13)	0.06 (−0.30, 0.42); P=0.746
TDI responder at day 84, n (%) ^a	277 (55)	279 (55)	0.97 (0.76, 1.25); ^b P=0.816
SGRQ score at day 84	n=481	n=486	
LS mean change from baseline (SE)	−6.03 (0.57)	−5.57 (0.57)	−0.46 (−2.04, 1.13); P=0.571
SGRQ responder at day 84, n (%) ^c	241 (48)	237 (47)	1.05 (0.81, 1.35); ^b P=0.727
CAT score, day 84	n=493	n=492	
LS mean change from baseline (SE)	−1.83 (0.25)	−1.62 (0.25)	−0.21 (−0.91, 0.48); P=0.547
CAT responder at day 84, n (%) ^d	253 (50)	228 (45)	1.24 (0.96, 1.60); ^b P=0.104
Rescue use (mean puffs/day) weeks 1–12	n=480	n=484	
LS mean change from baseline, (SE)	−0.9 (0.1)	−0.8 (0.1)	0.0 (−0.2, 0.1); P=0.557
Rescue use (% rescue-free days) ^e	n=480	n=484	
Estimated median difference (95% CI)			0 (0.00, 0.18); P=0.484

Notes: ^aTDI responders were defined as patients with a ≥ 1 unit TDI focal score. ^bOdds ratio. ^cResponse was defined as a reduction from baseline of ≥ 4 units in SGRQ score. ^dResponse was defined as a reduction from baseline of ≥ 2 units in CAT score. ^eHodges–Lehmann estimates for the median treatment difference and 95% CI are based upon a Wilcoxon rank-sum test; P-value is based on van Elteren test.

Abbreviations: CAT, COPD Assessment Test; CI, confidence interval; ITT, intent-to-treat; LS, least squares; SE, standard error; SGRQ, St George's Respiratory Questionnaire; TDI, transition dyspnea; TIO, tiotropium; UMEC, umeclidinium.

TDI focal scores that exceeded the MCID of 1 unit at day 84 (Table 3). However, no treatment difference between UMEC and TIO was observed for TDI at days 28 and 56 (Table S3) and day 84 (Table 3). Approximately half of patients in each treatment group were considered to be responders to TDI, SGRQ, and CAT on day 84 with no difference in the odds of being a responder versus being a nonresponder for each end point (Table 3).

Rescue medication use

There were no differences between treatment groups in the LS mean change from baseline in rescue medication use over weeks 1–12 (0.0 puffs/day, 95% CI: –0.2 to 0.1; Table 3), or in the median percentage of rescue-free days (0.0, 95% CI: 0.00 to 0.18; Table 3).

Inhaler assessments

At the end of the treatment period, a larger proportion of patients indicated an overall device preference for the ELLIPTA™ inhaler compared with the HandiHaler® (57% and 19%, respectively; Table 4). At day 84, 95% of patients rated the ease of use of the ELLIPTA™ inhaler as “Very easy” or “Easy”, while 78% rated the ease of use of the HandiHaler® as “Very easy” or “Easy” (Table 4). The proportion of patients reporting “Neutral” in the ease-of-use assessment at day 84 was 16% for the HandiHaler® and 5% for the ELLIPTA™ inhaler (Table 4). On days 1, 28, and

84, the proportion of patients with at least one overall error ranged between 8% and 13% and was similar between both treatment groups. The proportion of patients with critical errors with the ELLIPTA™ inhaler and with the HandiHaler® was very low at all clinic visits for both inhaler types and ranged between 1% and 4%.

Post hoc analyses

The LS mean change from baseline in trough FEV₁ for UMEC at day 85 was greater for patients with GOLD Grade 2 COPD than those with GOLD Grade 3 COPD with both UMEC and TIO (Table S4). A greater difference in the LS mean change from baseline in trough FEV₁ in favor of UMEC versus TIO was observed for patients with GOLD Grade 2 COPD (63 mL, 95% CI: 25–100; $P=0.001$; Table S4) but not for patients with GOLD Grade 3 COPD at day 85 (39 mL, 95% CI: –4 to 82; $P=0.074$; Table S4). Patients in GOLD Group B and Group D had significant differences in the LS mean change from baseline in trough FEV₁ in favor of UMEC versus TIO (57 mL, 95% CI: 16–98; $P=0.006$; and 46 mL, 95% CI: 7–85; $P=0.020$, respectively; Table S4). The LS mean change from baseline in trough FEV₁ was greater for UMEC compared with TIO for both ICS users and ICS nonusers (Table S4). For patients with GOLD Grade 3 COPD, a greater difference in the LS mean change from baseline in trough FEV₁ in favor of UMEC was observed for ICS users (65 mL, 95% CI: 7–123; $P=0.028$) but not for ICS nonusers (9 mL, 95% CI: –55 to 72; $P=0.784$). UMEC was associated with a greater chance of having an increase in trough FEV₁ from baseline of ≥ 100 mL above baseline at day 85 compared with TIO (UMEC 53%; TIO 45%; odds ratio: 1.35, 95% CI: 1.06–1.74; $P=0.017$; Table S4), and at days 28, 56, and 84 (Figure 4).

Safety

The overall incidence of AEs during treatment was similar between both treatment groups (32% in the UMEC group and 30% in the TIO group; Table 5). The most common AEs were headache (6% for both treatments) and nasopharyngitis (5% for both treatments).

Two deaths occurred on-treatment during the study (TIO, <1%). Neither of the two events (alcohol poisoning, seizure) were considered related to study drug by the reporting investigator.

A total of 58 patients (11%) in the UMEC group and 48 patients (9%) in the TIO group experienced an on-treatment COPD exacerbation. There were minimal changes from baseline in vital signs over the treatment period for either treatment group (Table S5). The incidence of AEs of

Table 4 Inhaler assessments

Assessment type	UMEC 62.5 µg (n=509)	TIO 18 µg (n=508)	Total (N=1,017)
Overall device preference at the end of the treatment phase, ^a n (%)			
ELLIPTA™	280 (56)	290 (59)	570 (57)
HandiHaler®	111 (22)	78 (16)	189 (19)
No preference	107 (21)	126 (26)	223 (23)
Inhaler ease of use at day 84, ^b n (%)			
ELLIPTA™			
Very easy	294 (62)	296 (62)	590 (62)
Easy	154 (33)	158 (33)	312 (33)
Neutral	22 (5)	21 (4)	43 (5)
Difficult	1 (<1)	2 (<1)	3 (<1)
Very difficult	0	0	0
HandiHaler®			
Very easy	164 (35)	178 (37)	342 (36)
Easy	196 (42)	198 (42)	394 (42)
Neutral	79 (17)	74 (16)	153 (16)
Difficult	29 (6)	27 (6)	56 (6)
Very difficult	3 (<1)	0	3 (<1)

Notes: ^aNumber of patients with analyzable data: UMEC =498, TIO =494, and total =992. ^bNumber of patients with analyzable data: UMEC =471, TIO =477, and total =948.

Abbreviations: TIO, tiotropium; UMEC, umeclidinium.

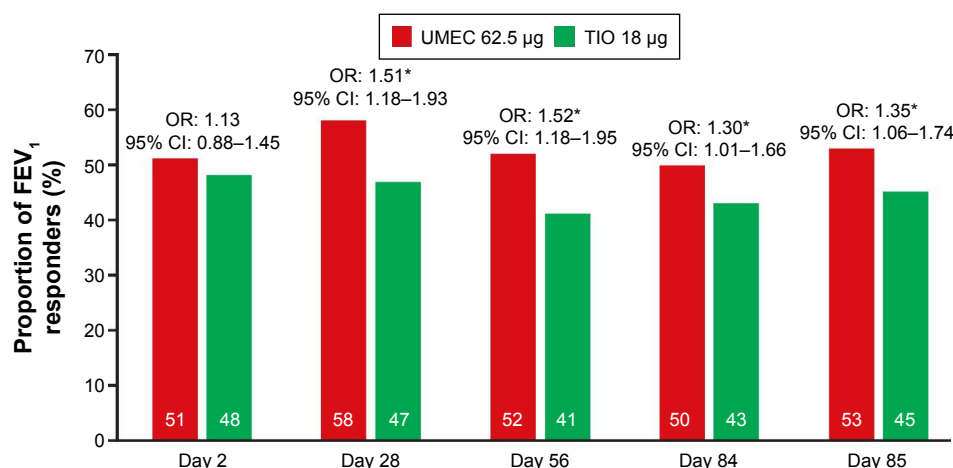


Figure 4 Proportion of trough FEV₁ responders.

Notes: * $P < 0.05$. Response was defined as an increase of ≥ 100 mL above baseline FEV₁.

Abbreviations: CI, confidence interval; OR, odds ratio; FEV₁, forced expiratory volume in 1 second; TIO, tiotropium; UMEC, umeclidinium.

special interest was similar between the two treatment groups ($\leq 2\%$ in both groups; [Table S6](#)).

Discussion

This study aimed to determine whether once-daily UMEC 62.5 µg was non-inferior to TIO 18 µg by trough FEV₁ in patients with symptomatic moderate-to-severe COPD. In this randomized trial, UMEC 62.5 µg was found to be both non-inferior and superior to TIO 18 µg, when assessed by trough FEV₁ at day 85 in the PP population (treatment difference: 59 mL, 95% CI: 29–88), as the lower bound of the 95% CI around the treatment difference exceeded 0 mL. Similar differences in this primary end point were observed in the ITT population.

As with the primary end point, UMEC demonstrated statistically significant improvements in trough FVC at days 28, 56, 84, and 85 compared with TIO. Interestingly,

the treatment difference for trough FEV₁ and FVC did not reach statistical significance after the first dose (day 2) but was apparent at day 28, the first assessment after repeat dosing. The 12- to 24-hour WM FEV₁ at day 84 was statistically significantly greater for UMEC versus TIO, whereas there were no differences between the treatments for WM FEV₁ over 0–12 and 0–24 hours. This result was further supported by serial FEV₁ measurements and demonstrates the 24-hour duration of bronchodilation action with UMEC, possibly suggesting that UMEC has greater efficacy in the second half of a 24-hour dosing interval than TIO. Analyses performed post hoc highlighted that more patients receiving UMEC than patients receiving TIO achieved a clinically important (≥ 100 mL) improvement in trough FEV₁. Patients also generally favored using the ELLIPTA™ inhaler over the HandiHaler®, as shown by the larger proportion of patients reporting a device preference and greater ease of use for the ELLIPTA™ inhaler compared with the HandiHaler®.

A possible explanation for the difference in bronchodilation between UMEC and TIO is the dose–response relationships of the two drugs. Dose–response evaluations for UMEC and TIO in COPD have shown that both drugs have relatively flat dose–response curves.^{25–27} Nevertheless, these evaluations showed dose differentiation for both drugs, with maximal improvements in lung function generally observed at doses above the approved doses evaluated in the current study.^{25–27} Therefore, a potential explanation for the difference in bronchodilation between UMEC and TIO is that the approved dose of UMEC (62.5 µg)^{9,10} is more optimally positioned near the top of its dose–response curve compared with the approved dose of TIO (18 µg).²⁸ Additionally, while both compounds are very potent muscarinic antagonists,

Table 5 Summary of safety results (ITT population)

Safety measure	UMEC 62.5 µg (n=509)	TIO 18 µg (n=508)
Any on-treatment AE, n (%)	165 (32)	153 (30)
Most common on-treatment AEs reported by $\geq 3\%$ of patients in either treatment group, n (%)		
Headache	30 (6)	32 (6)
Nasopharyngitis	27 (5)	23 (5)
Any on-treatment nonfatal SAEs, n (%)	17 (3)	14 (3)
Any on-treatment fatal SAEs, n (%)	0	2 (<1)
Any on-treatment drug-related AEs, n (%)	17 (3)	8 (2)
Number of patients with a COPD exacerbation, n (%)	58 (11)	48 (9)

Abbreviations: AE, adverse event; ITT, intent-to-treat; SAEs, serious adverse events; TIO, tiotropium; UMEC, umeclidinium.

they are chemically distinct, providing a different array of receptor–ligand interactions.²⁹ Although quite speculative, differences in interactions with muscarinic receptors may also contribute to differences in functional activity. However, to understand differences in pharmacology between these two drugs, they would have to be tested at equi-effective doses, preferably in the same subjects.

Finally, because of the differences in administration between the two medications and the different device used for each, it is not possible to determine whether the differences in bronchodilator effect observed are due to pharmacologic effects of the drugs themselves or to differences in the devices that might have influenced inhalation technique and/or drug absorption and lung deposition. There was a higher patient preference for the ELLIPTA™ device compared with the HandiHaler® device, particularly for ease of use. The preferred device may have been used more effectively, thus leading to improved administration of the drug. This in turn could have contributed to the greater improvement in lung function results for UMEC compared with TIO. However, further studies would be necessary to confirm or differentiate these effects.

The incidence of any AEs was similar between both treatment groups, and the most common AEs were headache and nasopharyngitis, in agreement with previous studies of UMEC 62.5 µg.⁶

Improvements from baseline in TDI, SGRQ score, and CAT score were demonstrated with both UMEC and TIO. No differences in rescue medication use were observed between UMEC and TIO, as assessed by mean number of puffs per day of rescue medication and percentage of rescue-free days over weeks 1–12. There were no statistically significant between-group differences for PROs.

The reason for the difference between objective lung function assessments and the subjective PRO assessments is likely to be multifaceted. It is possible that the extra ≈60 mL in trough FEV₁ at day 85 observed with UMEC versus TIO in this study is the result of improved bronchodilation during the second part of the day, when patients' levels of activity are not sufficient to provoke symptoms.³⁰ Furthermore, patients with COPD have reported that the early morning involves the greatest burden on them in terms of symptoms.³⁰ Therefore, PROs which focus on the early morning period may be required to detect a treatment difference in PRO assessments between UMEC and TIO. In support of this hypothesis, it is notable that significant reductions in the limitation of morning activities were documented in favor of aclidinium versus TIO.¹² Additional studies are required to explore this further. In addition, because PROs are subjective outcomes and marked clinically important benefits on TDI and SGRQ

were seen from baseline with both LAMAs, alternative study designs may be needed to increase sensitivity to detect differences in PROs between the two active LAMAs.

Until this investigation, studies specifically designed and powered to compare the efficacy and safety of UMEC with blinded TIO were lacking. A Phase II 14-day study, which included an open-label TIO 18 µg arm, demonstrated that short-term efficacy was achievable with UMEC 62.5 µg and TIO 18 µg.²⁶ However, previous studies comparing twice-daily aclidinium and glycopyrronium with TIO failed to show similar findings.^{11,12} In a study which compared aclidinium with TIO, aclidinium showed comparable efficacy to TIO by change from baseline morning trough FEV₁ at week 6 (treatment difference: 38 mL, not significant).¹² Similarly, glycopyrronium was shown to be non-inferior to TIO by trough FEV₁ at week 12 (difference: 0 mL, $P<0.001$).¹¹

There are potential limitations to the interpretation of the data in this study. First, there were differences in the markings between the TIO and PBO capsules which may be seen as influencing the blinding of study treatment. However, a similar methodology to account for this has been used in previous studies that have detected no differences in trough FEV₁ between the alternative LAMA therapy glycopyrronium and TIO (eg, the GLOW5 comparator trials of glycopyrronium versus TIO).¹¹ Second, this was a controlled, short-term study in which patients were supervised while administering their study medication. Therefore, patients were expected to have minimal critical errors in device handling. Additionally, critical errors were measured in a subset of patients only, and so these results are less likely to be definitive. Longer-term studies in a real-world population are required to further characterize the frequency of critical errors with these inhalers. Finally, the duration of this study was too short to evaluate the comparative efficacy of UMEC and TIO on exacerbation rate.

Conclusion

The results of this randomized trial indicate that treatment with UMEC provides superior efficacy when assessed by trough FEV₁ at day 85 versus TIO in patients with symptomatic moderate-to-severe COPD. Both treatments showed clinically meaningful improvements in PRO assessments, with no significant differences between treatment groups for TDI, SGRQ, and CAT scores. UMEC and TIO showed similar tolerability and safety profiles.

Acknowledgments

This study was funded and conducted by GSK (GSK study number: 201316; [Clinicaltrials.gov](https://clinicaltrials.gov/ct2/show/study/NCT02207829) identifier: NCT02207829).

Palvi Shah (GSK Clinical Statistics, Stockley Park, UK) provided substantial contributions to the study data analysis, data interpretation, and preparation of the manuscript. Medical writing assistance was provided by Stuart Wakelin and Matthew Robinson of Fishawack Indicia Ltd (UK), funded by GSK.

Disclosure

GF has no conflicts of interest in this work. FM holds a CIHR/GSK research chair on COPD and has received fees for speaking at conferences sponsored by Boehringer Ingelheim (BI), Novartis, and Grifols, and has served on advisory boards for GSK and BI. He has also received research grants from GSK, BI, AstraZeneca, Nycomed, and Novartis, and has received an unrestricted research grant from BI and GSK. SK, MVB, AC, and WAF are employees of GSK and hold stocks/shares in GSK. RT was an employee of GSK and holder of stock/shares in GSK at the time of the study but is now employed by Pearl Therapeutics. The authors report no other conflicts of interest in this work.

References

- Global Initiative for Chronic Obstructive Lung Disease (GOLD) [updated 2015]. Available from: <http://www.goldcopd.org/>. Accessed August 12, 2015.
- World Health Organization – burden of COPD; 2015. Available from: <http://www.who.int/respiratory/copd/burden/en/>. Accessed August 19, 2015.
- Barr RG, Bourbeau J, Camargo CA, Ram FS. Inhaled tiotropium for stable chronic obstructive pulmonary disease. *Cochrane Database Syst Rev*. 2005;(2):CD002876.
- Tashkin DP, Celli B, Senn S, et al. A 4-year trial of tiotropium in chronic obstructive pulmonary disease. *N Engl J Med*. 2008;359(15):1543–1554.
- O'Donnell DE, Fluge T, Gerken F, et al. Effects of tiotropium on lung hyperinflation, dyspnoea and exercise tolerance in COPD. *Eur Respir J*. 2004;23(6):832–840.
- Trivedi R, Richard N, Mehta R, Church A. Umeclidinium in patients with COPD: a randomised, placebo-controlled study. *Eur Respir J*. 2014;43(1):72–81.
- Eklira Genuair EMA assessment report; 2012. Available from: http://www.ema.europa.eu/docs/en_GB/document_library/EPAR_-_Public_assessment_report/human/002211/WC500132663.pdf. Accessed August 12, 2015.
- Seebri Breezhaler EMA assessment report; 2012. Available from: http://www.ema.europa.eu/docs/en_GB/document_library/EPAR_-_Public_assessment_report/human/002430/WC500133771.pdf. Accessed September 23, 2015.
- INCRUSE ELLIPTA: highlights of prescribing information; 2013. Available from: https://www.gsksource.com/pharma/content/dam/GlaxoSmithKline/US/en/Prescribing_Information/Incruse_Ellipta/pdf/INCRUSE-ELLIPTA-PI-PIL.PDF. Accessed August 12, 2015.
- Summary of product characteristics: Incruse 55 micrograms inhalation powder; 2015. Available from: <https://www.medicines.org.uk/emc/medicine/29394>. Accessed August 12, 2015.
- Chapman KR, Beeh KM, Beier J, et al. A blinded evaluation of the efficacy and safety of glycopyrronium, a once-daily long-acting muscarinic antagonist, versus tiotropium, in patients with COPD: the GLOW5 study. *BMC Pulm Med*. 2014;14:4.
- Beier J, Kirsten AM, Mroz R, et al. Efficacy and safety of aclidinium bromide compared with placebo and tiotropium in patients with moderate-to-severe chronic obstructive pulmonary disease: results from a 6-week, randomized, controlled Phase IIIb study. *COPD*. 2013;10(4):511–522.
- World Medical Association. World Medical Association Declaration of Helsinki: ethical principles for medical research involving human subjects; 2008. Available from: <http://www.wma.net/en/30publications/10policies/b3/17c.pdf>. Accessed September 29, 2015.
- Celli BR, MacNee W. Standards for the diagnosis and treatment of patients with COPD: a summary of the ATS/ERS position paper. *Eur Respir J*. 2004;23(6):932–946.
- Decramer M, Anzueto A, Kerwin E, et al. Efficacy and safety of umeclidinium plus vilanterol versus tiotropium, vilanterol, or umeclidinium monotherapies over 24 weeks in patients with chronic obstructive pulmonary disease: results from two multicentre, blinded, randomised controlled trials. *Lancet Respir Med*. 2014;2(6):472–486.
- Maleki-Yazdi MR, Kaelin T, Richard N, Zvarich M, Church A. Efficacy and safety of umeclidinium/vilanterol 62.5/25 mcg and tiotropium 18 mcg in chronic obstructive pulmonary disease: results of a 24-week, randomized, controlled trial. *Respir Med*. 2014;108(12):1752–1760.
- Witek TJ Jr, Mahler DA. Minimal important difference of the transition dyspnoea index in a multinational clinical trial. *Eur Respir J*. 2003;21(2):267–272.
- Jones PW. St. George's Respiratory Questionnaire: MCID. *COPD*. 2005;2(1):75–79.
- Kon SS, Canavan JL, Jones SE, et al. Minimum clinically important difference for the COPD Assessment Test: a prospective analysis. *Lancet Respir Med*. 2014;2(3):195–203.
- Ingelheim B. Spiriva® 18 microgram, inhalation powder, hard capsule – package leaflet: information for the user; 2014. Available from: <https://www.medicines.org.uk/emc/PIL.16286.latest.pdf>. Accessed October 20, 2015.
- GSK. Incruse® 55 micrograms inhalation powder, pre-dispensed – package leaflet: information for the user; 2015. Available from: <https://www.medicines.org.uk/emc/PIL.29387.latest.pdf>. Accessed October 20, 2015.
- Donohue JF. Minimal clinically important differences in COPD lung function. *COPD*. 2005;2(1):111–124.
- Snapinn SM. Noninferiority trials. *Curr Control Trials Cardiovasc Med*. 2000;1(1):19–21.
- Lewis JA, Machin D. Intention to treat – who should use ITT? *Br J Cancer*. 1993;68(4):647–650.
- Church A, Beerahee M, Brooks J, Mehta R, Shah P. Dose response of umeclidinium administered once or twice daily in patients with COPD: a randomised cross-over study. *BMC Pulm Med*. 2014;14:2.
- Donohue JF, Anzueto A, Brooks J, Mehta R, Kalberg C, Crater G. A randomized, double-blind dose-ranging study of the novel LAMA GSK573719 in patients with COPD. *Respir Med*. 2012;106(7):970–979.
- Littner MR, Ilowite JS, Tashkin DP, et al. Long-acting bronchodilation with once-daily dosing of tiotropium (Spiriva) in stable chronic obstructive pulmonary disease. *Am J Respir Crit Care Med*. 2000;161:1136–1142.
- Summary of Product Characteristics: Spiriva 18 microgram inhalation powder, hard capsule. Available from: <https://www.medicines.org.uk/emc/medicine/10039>. Accessed January 27, 2016.
- Salmon M, Luttmann MA, Foley JJ, et al. Pharmacological characterization of GSK573719 (umeclidinium): a novel, long-acting, inhaled antagonist of the muscarinic cholinergic receptors for treatment of pulmonary diseases. *J Pharmacol Exp Ther*. 2013;345(2):260–270.
- Partridge MR, Karlsson N, Small IR. Patient insight into the impact of chronic obstructive pulmonary disease in the morning: an internet survey. *Curr Med Res Opin*. 2009;25(8):2043–2048.

International Journal of COPD**Dovepress****Publish your work in this journal**

The International Journal of COPD is an international, peer-reviewed journal of therapeutics and pharmacology focusing on concise rapid reporting of clinical studies and reviews in COPD. Special focus is given to the pathophysiological processes underlying the disease, intervention programs, patient focused education, and self management protocols.

This journal is indexed on PubMed Central, MedLine and CAS. The manuscript management system is completely online and includes a very quick and fair peer-review system, which is all easy to use. Visit <http://www.dovepress.com/testimonials.php> to read real quotes from published authors.

Submit your manuscript here: <http://www.dovepress.com/international-journal-of-chronic-obstructive-pulmonary-disease-journal>